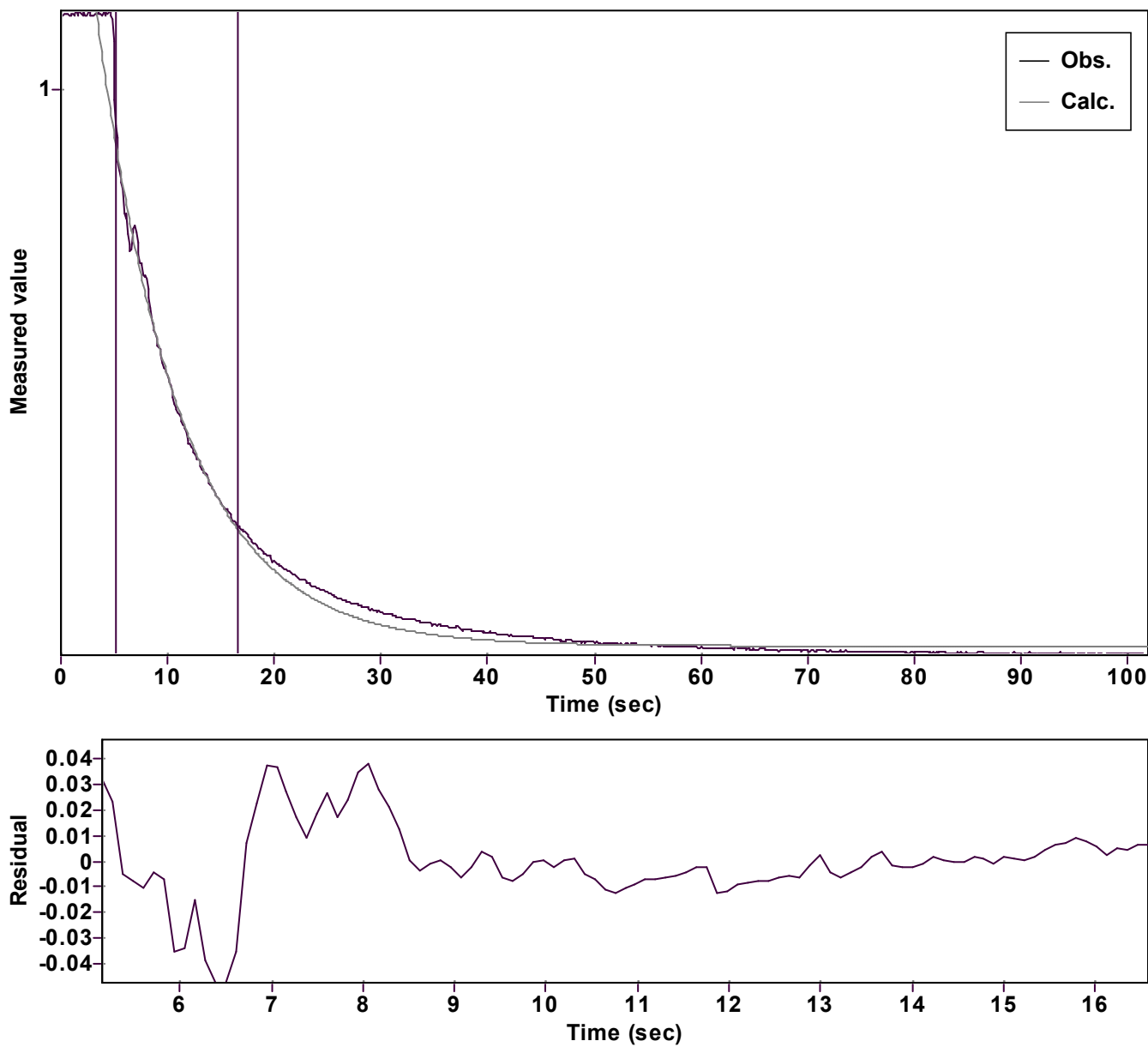


Evaluation of kinetic data with ExpoFit V 1.3

Graph



Function: y = A exp (-kx) + C (Exponential decrease)		Reference point: 0 (Zero)	
Amp A = 1.664463683813882 Â± 0.022572699639763		Quality r ² = 0.9935659300226	
Rate k = 0.127537857571436 Â± 0.005680292862451		Data points = 103 of 911	
Final C = 0.043590670545725 Â± 0.019982904327406		Conversion = 60.4 %	
Start at position: 5.152 / 0.93805 (17.5 %)		End at position: 16.576 / 0.2511 (77.9 %)	
ExpoFit file: Vinyl azide_3 equiv_fur+Nu_c01_000 (Data-Extract Date of file: xp 16/11/2025 21:07:56			
Source file: Vinyl azide_3 equiv_fur+Nu_c01_000 (Data-Extract Date of file: xt 16/11/2025 20:54:00			
Type of source file: Universal ASCII - file data			
2007 by Dr. Kempf		Date of print: 07/12/2025 00:20:29	